



MG
OPEN HOUSE
OLDMELDRUM

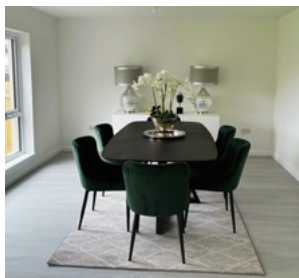
12 - 4PM

27.06.25



Plot 19 - Spey

The Spey is a luxurious home featuring a welcoming entrance hall, a formal lounge for entertaining, and an open kitchen/dining/living space with access to the back garden. It includes a cloakroom, utility room, and integral double garage. The first floor has a study and five spacious double bedrooms, with the master bedroom having a dressing room and en-suite. Two bedrooms share a jack-and-jill en-suite, while the other two are served by a family bathroom.



WP

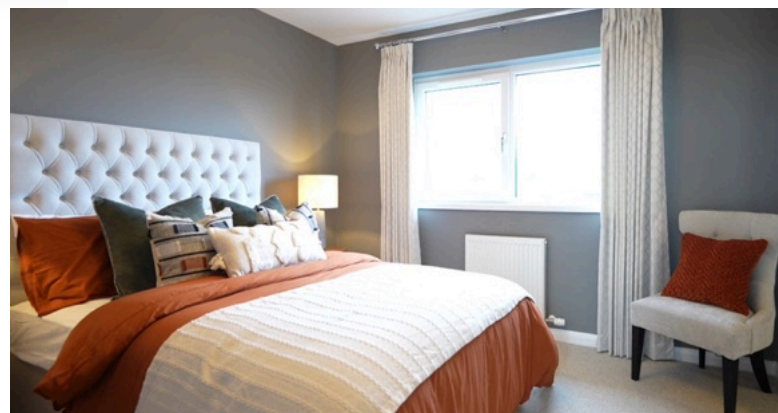
WEST CROFT PARK

If you prefer rural living, Memsie is ideal for you! Westcroft Park offers family homes ranging from 3 to 6 bedrooms, featuring open-plan areas and studies for modern living. Our team supports you through the purchasing process, and with significant interest, we look forward to starting construction soon.

NH

NETHERMILL HEIGHTS

Cruden Bay is a charming village in Aberdeenshire, Scotland, situated 26 miles from Aberdeen along the Bay of Cruden. It is known for its beautiful hotels, stunning golf course, and pristine beach, making it an attractive destination for visitors.



G

GREENACRES

Peterhead, located on Scotland's eastern shores, is the country's most easterly town, with easy access to the A90 and near Aberdeen and Dyce. Once a fishing village, it has grown into a thriving community of about 19,000 residents, making it Aberdeenshire's largest town. Known for its friendly people, diverse shopping options, and essential services, Peterhead is surrounded by beautiful landscapes.



MR

— MILLBURN RISE —

Combs features a breathtaking, secluded beach located about five miles from Fraserburgh, offering a variety of house types to choose from.



MG

— MELDRUM GRANGE —

Meldrum Grange in Oldmeldrum offers beautiful homes for various lifestyles. Known as the "Granary of Aberdeen," Oldmeldrum is famous for barley and hosts Scotland's Glen Garioch distillery, offering tours and whisky tastings since 1797. A short drive away, the Meldrum House Country Hotel features a restaurant, a unique 'Cave Bar' with over 120 whiskies, and an 18-hole golf course. Nearby, the Lochter Activity Centre offers activities like archery and water zorbing, along with the Lochter Fishery, which has three fishing lochs across 20 acres.

